



泰準精密工業有限公司
信象科技有限公司

Tai-Zhun Precision Industry Co.,LTD.



泰準精密

Tai-Zhun Precision



Company History

- Introduction of Tai-Zhun(Shin-Siang)

Tai-Zhun Precision Industry Co., LTD., founded in 1983, is a professional precision finishing manufacturer. Based on the expertise experience over the past 36 years, we have devoted ourselves to meeting every need of our customers, cooperating with them to approach innovative design and development, following requirements for international verifications, and providing high-quality products in the precision industry by strictly practicing our SOPs and specifications.

- Business Categories

- ✓ Relational Equipment for the IC Semiconductor Package and Testing
- ✓ Relational Fabrication of SOCKET and KIT for IC Tests
- ✓ CNC Milling Machine Processing
- ✓ Precision Parts Lapping
- ✓ Precision Molding and Fixtures
- ✓ Automated Design and Fabrication of Measuring Devices

- Management Philosophy

Ever since the founding of our company, we have always stood our ground in the management concepts of pursuing the essence of integrity, quality, service and innovation. In order to welcome the advent of Industry 4.0, we are committed to expanding the operation of 5G related productions, such as PCB boards for IC test boards, RF shielding boxes, electromechanical integration, etc. Hence, we are confident of creating a sustainable operating environment by meeting customer's requirements for high-quality and short-due-date of precision fabrication.



Company History

- Quality Authentication

To meet the requirements of precision manufacture for a SMART factory, we have launched ISO9001:2015 as our new quality management verification since 2019/7/2



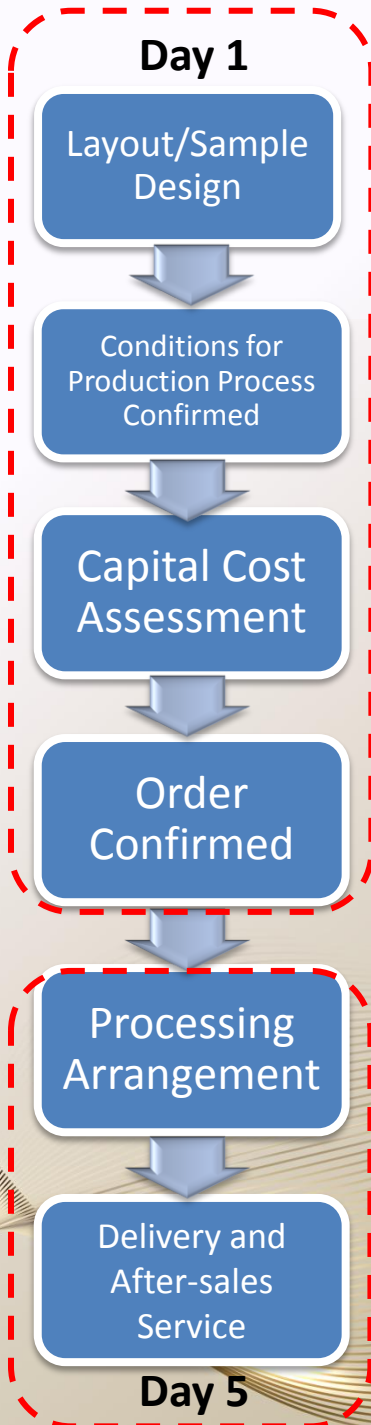
Business/Service Categories

- ◆ Relational Parts and Fixtures for the Semiconductor Industry
- ◆ Precision Parts Processing for Electronics Industry
- ◆ Parts Processing for Automation Equipment
- ◆ Relational Parts and Fixtures for the Solar Industry
- ◆ Mechanical Precision Parts for Other Industries

- ✓ Printing Machine Roller
- ✓ Food Industry
- ✓ Semiconductor
- ✓ TFT/LCD
- ✓ 3D Mold
- ✓ Spring Machine Mold
- ✓ Cutter Finishing Machine
- ✓ Solar Energy

- ✓ CD/DVD Printer
- ✓ Roll Forming Machine
- ✓ SMT
- ✓ LED
- ✓ Screen Printing Machine
- ✓ PCB

Cooperation in Design - Production Process



- Support for all kinds of layout formats and hand sketching
- Sample is provided, and reverse engineering design is feasible
- Support for all kinds of processing materials
 - ✓ Stainless Steel, Iron Alloys, Copper-Aluminum Alloy, Titanium Alloy
 - ✓ Engineering Plastic Parts
- Quoted price in real time is provided according to the process conditions
 - ✓ Accurate engineering quoted price in real time can be approached for our customers
 - In a few hours to 1 working day at most
- Sign the contract
 - ✓ We can arrange the production process on the exact same day
- General Case : 15~20 working days
- Urgent Case : 5~7 working days
- The earliest time that we can surely deliver our product from quoted price confirmed to shipment.
 - ✓ Within 1 week



Cooperation in Design - Machine improvement case

- Cooperation in Design & Parts manufacturing
Tai-zhun Precision has a professional team that can design mechanical parts to improve the effectiveness of operating machines and old machines, customize equipment parts, extend the life of machine parts, improve machine stability and functionality, and solve customers All intractable diseases are in the operation process.
- Brand specifications
(Relational Equipment for the IC Semiconductor)
✓ Cohu /Ismeca /Matrix /YTEC /ASM /Chroma /Cobest /Epson /ADVANTEST /HITACHI /Besi /Hon.PREC ...etc
- Machine type
 - ✓ ATE
 - ✓ Pick & Place 、 Turret
 - ✓ Soldering machine
 - ✓ AOI...等
- Contact process
 - ✓ Molding /wire bonding /Flip Chip /SMT /Die bonding /Trim and Form/Final test...etc

Product Introduction – Special Parts and Fixtures

- **Materials**

- ✓ General Materials – Aluminum, sus, Iron, Steel, SKD, Copper, Ti , etc.
- ✓ Engineering Plastic – EKH11, ESD, SP-1, ULTEM, PEEK, TORLON, SCM, PTFE, PC, POM, PVC, PBI Black, Bakelite and FRP...
- ✓ Special Materials – Molybdenum, Tungsten Steel, Permalloy and Pure Iron...

- **Processing MAX Stroke/Precision**

- ✓ Milling Machine – Processing MAX Stroke – 1450mm
– Precision:(Tolerance 0.005mm, min Aperture $\phi 0.10$ [depends on the actual layout])
- ✓ Lathe – Processing MAX Stroke $\phi 150$, length 800mm
– Precision : 0.01mm
- ✓ Precision of E.D.M. : 0.01mm
- ✓ Precision of Grinding Machine : 0.01mm ; and the roughness can be achieved is RA0.1
- ✓ Punching Machine
- ✓ Cleaning equipment– Ultrasonic Cleaner



焊接轴底部



PAD HOLDER



鎢鋼punch



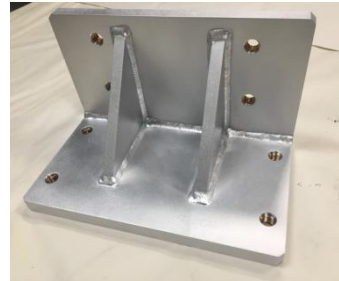
Muti-column $\phi 10$
Insert



Product Introduction – Special Parts and Fixtures



**Mirror plane Ra0.1
Polished titanium**



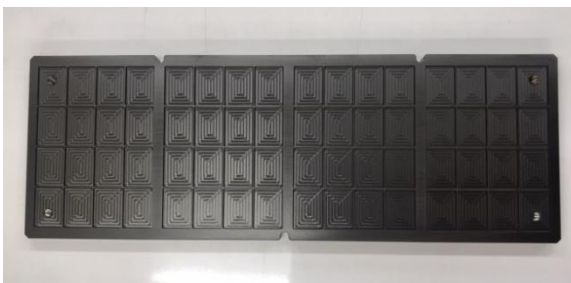
Welded parts



Ball bearing(floating)



PBS Thermal Riser1x1



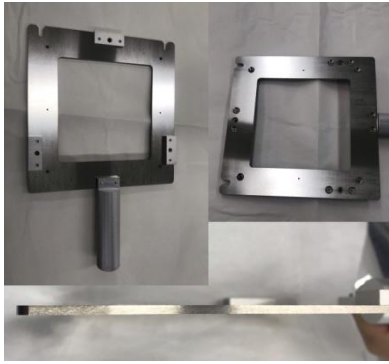
**WS -Integrated indenter
(ESD coated diamond.)**



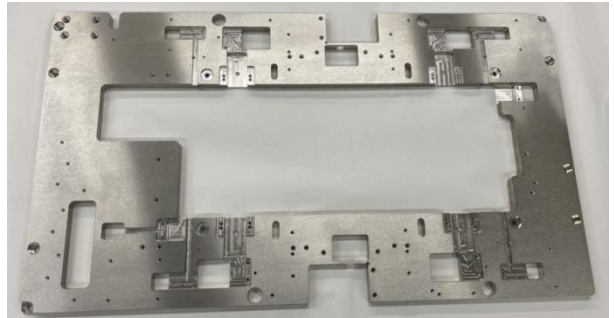
pusher comb (Solar energy) 8



Product Introduction – Special Parts and Fixtures



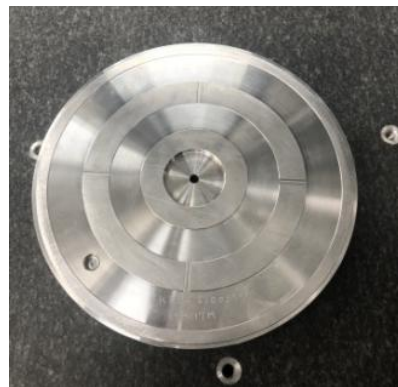
**Optics-waiting for proofs
Plane / Parallelism 0.01mm**



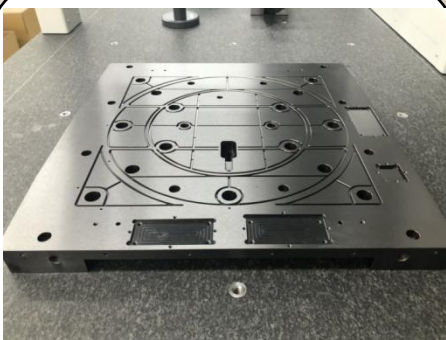
Feeding bottom plate - Flatness 0.05



Conductive ceramic vacuum chuck



chuck base



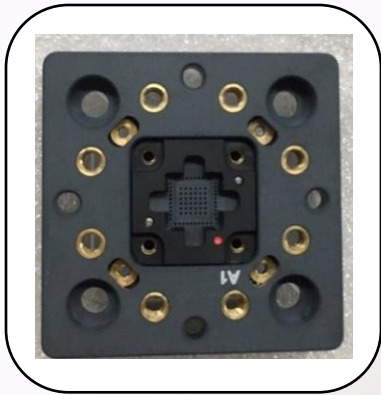
ESD60601 chuck(Front)



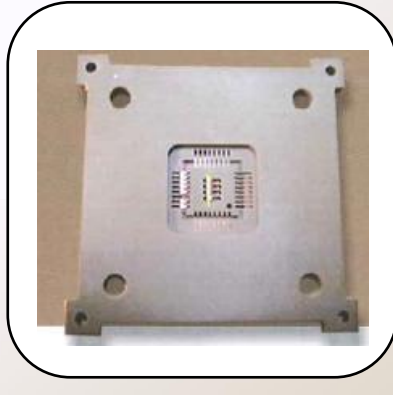
ESD60601 chuck(back)



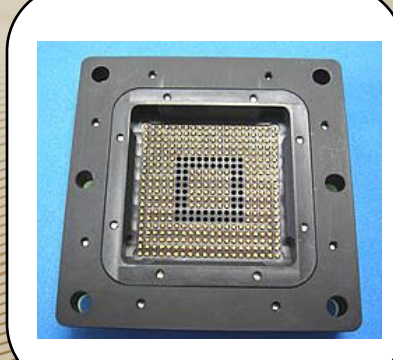
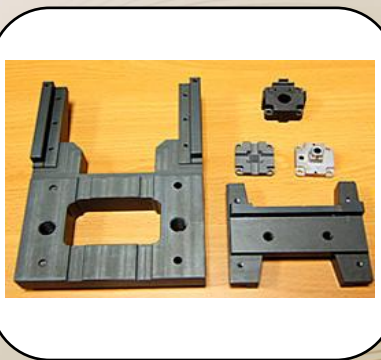
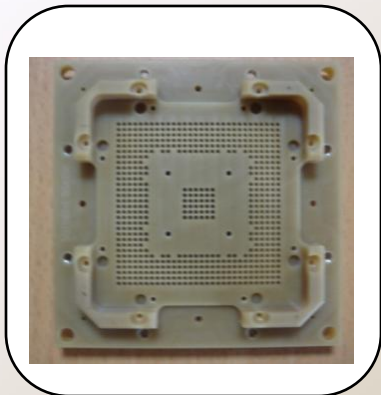
Product Introduction – Socket



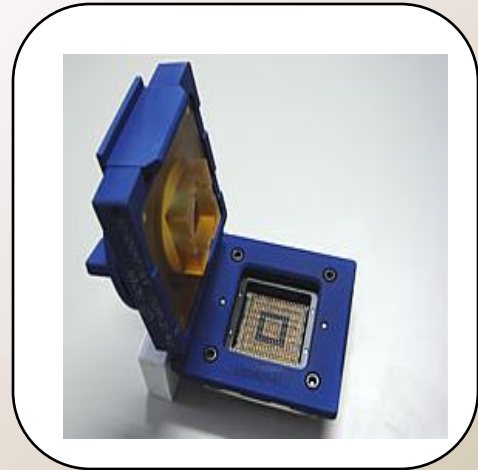
SOCKET



S-PIN SOCKET



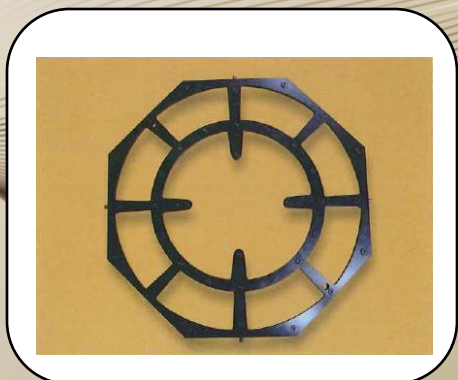
Product Introduction – Socket



Clamshell-style Spin Hand Socket Lid

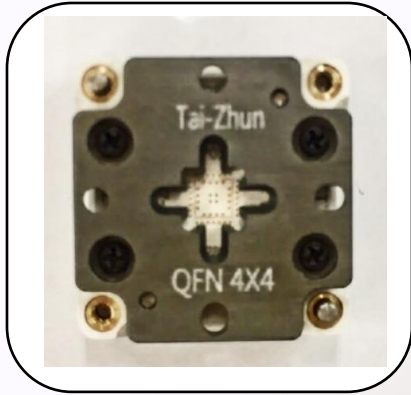


Simple-style Spin Hand Socket Lid

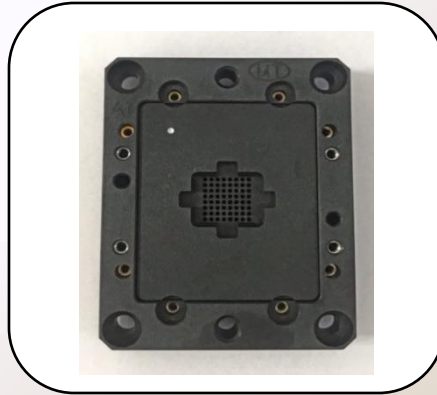


LOAD BOARD RETAINER

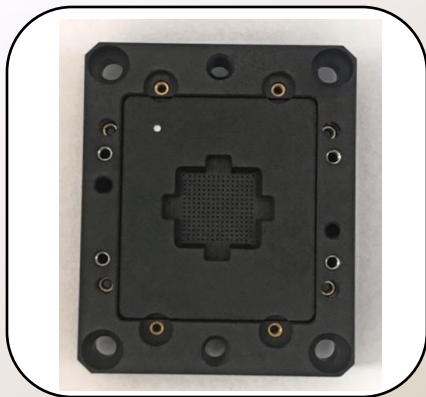
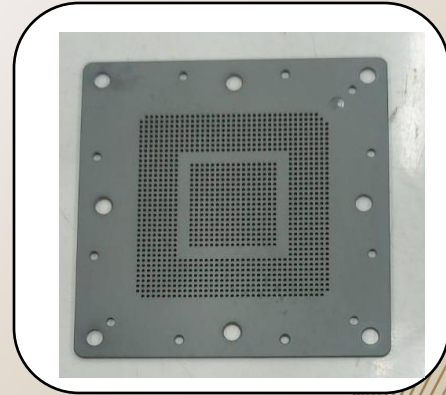
Product Introduction – Socket



SOCKET_QFN4428



SOCKET_BGA10x8

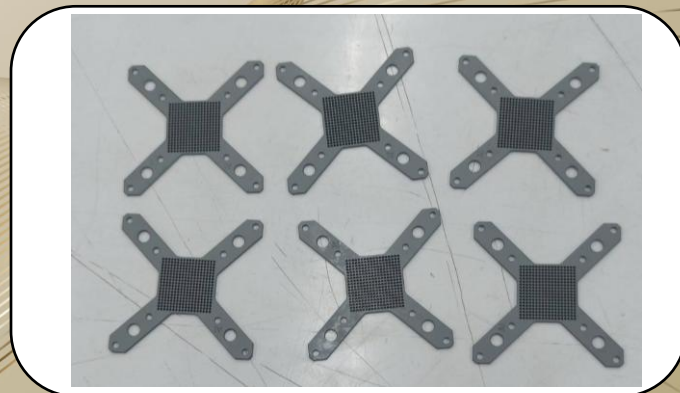
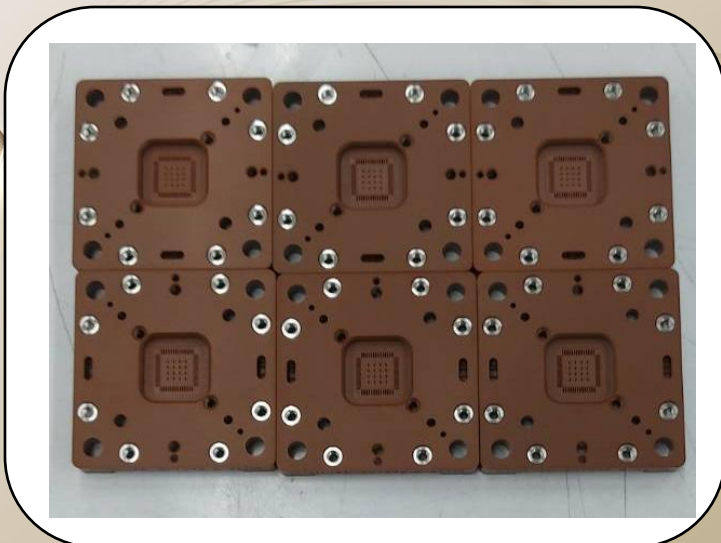


SOCKET_QFN11x11

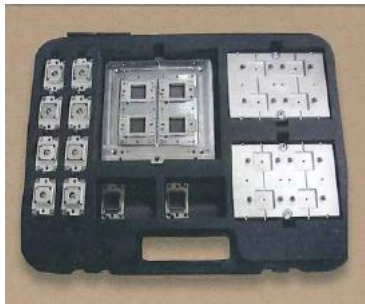


socket_QFN28 5x5

RT



Product Introduction – Kit



**SEIKO EPSON NS-7000
CHANGE KIT**



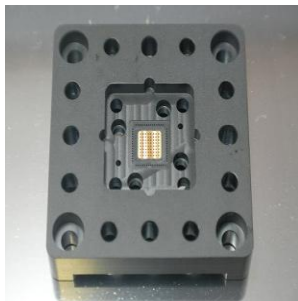
SOCKET GUIDE



QFN PROBE SOCKET



S-PIN SOCKET



QFN PROBE SOCKET



PRECISOR



M674151



Product Introduction – Kit



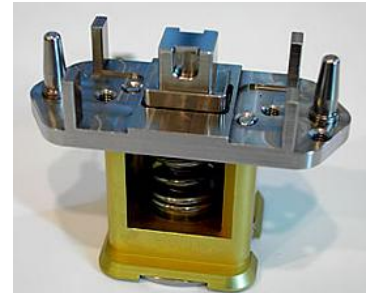
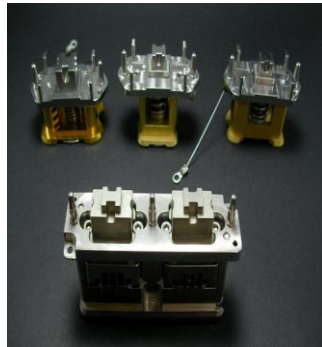
T-TRAY-M674151



**Change kits
QFP100 14x20x2.75**



Contact blade



**BGA577-20.2*20.2*1.65
ESD Change kit Dual site**



Probe axis-nozzle

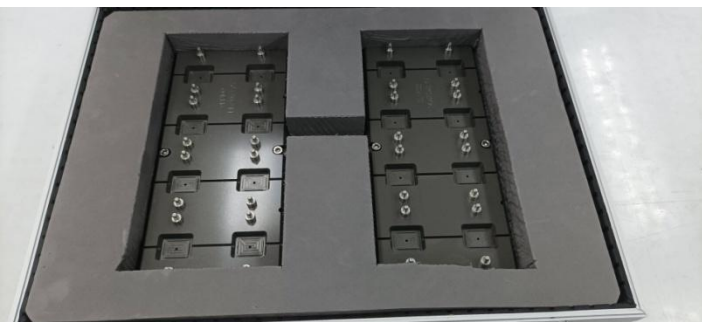


Product Introduction – Kit



SOCKET BASE

Contact blade



SHUTTLE

Machinery Equipment -CNC milling machine



MV184D/12C 主軸轉速12000
最大加工行程X1024 Y610
加工精度0.005mm



YCM FV-102A 主軸轉速10000
最大加工行程X1020 Y520
加工精度0.005mm



FEELER VPM-30A 主軸轉速10000
最大加工行程X750 Y410 加工精度0.005mm

Machinery Equipment -CNC milling machine



FEELER FV-1000A 主軸轉速10000
最大加工行程X1020 Y500
加工精度0.005mm



YCM XV-1020A 主軸轉速10000
最大加工行程X1020 Y520
加工精度0.005mm



FEELER FV-1000A 主軸轉速10000
最大加工行程X1020 Y500
加工精度0.005mm



YCM FV-56A 主軸轉速10000
最大加工行程X500 Y400
加工精度0.005mm

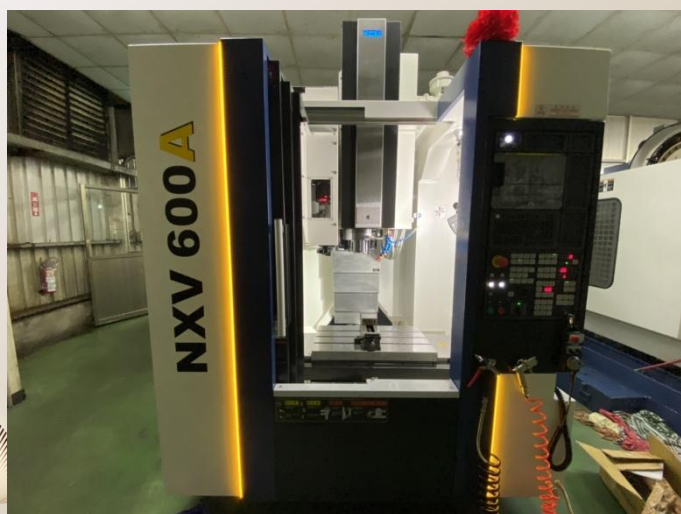
Machinery Equipment -CNC milling machine



FEELER VVP-1300A 主軸轉速10000
最大加工行程X1300 Y550
加工精度0.005mm



YCM EV-1020A 主軸轉速10000
最大加工行程X1020 Y520
加工精度0.005mm



立式綜合加工機NXV600A主軸轉速12000
最大加工行程X軸600y軸410
加工精度0.005mm



Machinery Equipment -lathe



FENG KEH OT-700V-2

Main Spindle : 75~3600RPM

Processing MAX Stroke : X600 Y300 Z400

Precision : 0.01mm



MYTECH SZ-A8-V

Main Spindle : 75~3600RPM

Processing MAX Stroke : X600 Y300 Z350

Precision : 0.01mm



Quick Jet QJM-QB-VA Main Spindle : 75~3600RPM

Processing MAX Stroke : X600 Y300 Z400

Precision : 0.01mm



Bench Lathe

Machinery Equipment



Tapping Machine



Tapping Machine



Sawing Machine – CD360

Machinery Equipment



Lathe



Punch



Grinding Machine



E.D.M.

Apparatus Equipment

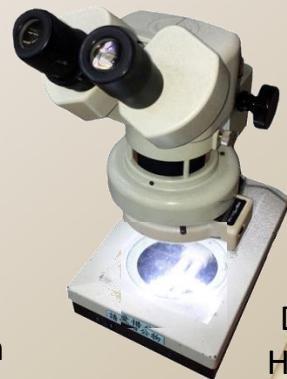
Tai-Zhun(Shin-Siang) company 's lab is equipped with various precision QC apparatus equipment , such as 2D height gauge(600mm), 3D CMM, contactless 3D image CMM, stereoscopic microscope, 2D image CMM, etc.



Keyence
LM series



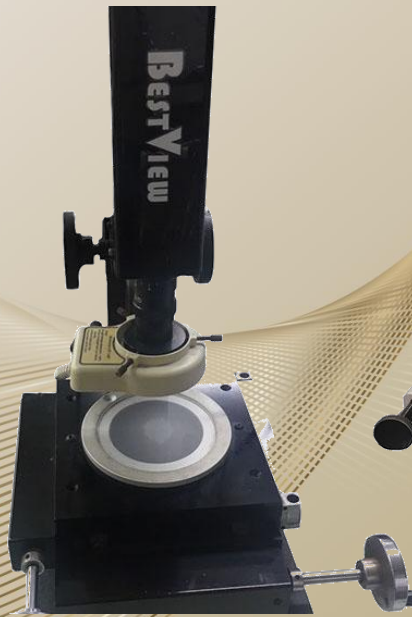
Projection
Microscope



Dsw10 23
High Power
Microscope



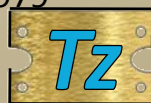
Microvu vertex
Full-automatic Image
CMM



Bestview 2D
Projector
-crop-u83979



Chien Wei cw2515
2D CMM



Apparatus Equipment



103 pieces of Block Gauge(Grade : 0)



Plug Gauge 130-50pin



Mitutoyo Height gauge



Tesa micro-hite600
Precision 2D Electronic
Height Gauge



Tesa micro-hite 3d manual
3D CMM

Apparatus Equipment



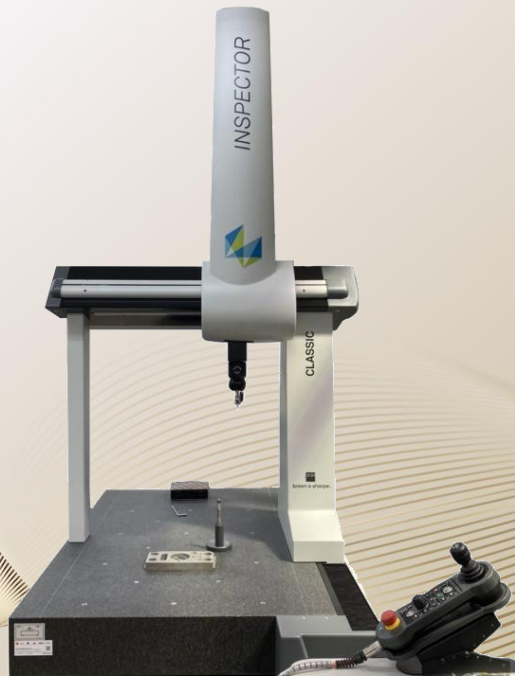
0-150mm Vernier Caliper



0-25mm Vernier Caliper



Mitutoyo Plain-type Surface Roughness Tester



Hexagon
Three-dimensional scalar bed -
inspector classic 686



Tesa Three-point Inside
Micrometer(20-50mm) x 4



Tesa Three-point Inside
Micrometer(60-75mm)

Process Control – Quality First

✓ Inspection station is built in each process

Verified QC personnel will perform quality test strictly at each station, ensuring that there will be no defects during production

✓ Product will be verified again before final shipment

By controlling production flow to prevent from the delayed due date due to an uncertain schedule.

✓ Precision quality is for both mold and parts products

By troubleshooting process issues to achieve the goal of lowering down the cost summary for our customers

✓ High quality material will always be top priority

As our belief in quality always comes first, we will never use materials with worse quality resulting the low-grade product

✓ Process control is strictly maintained

All our techniques such as punching, mold design, RD and fabrication are accomplished at our site through our expertized experience



Process Control – Quality First

✓ Prompt and Clear Response to Meet the Requirements from our Customers

We aim at communicating to all our customers without any time difference nor mis-comprehension

✓ Innovation, High Quality and High Throughput

From the stage of product design to mass production, our company is always pursuing an innovative way to increase the quality of our products and throughput, and to reduce the time spent for RD. We hope to help our customers be more advantageous in market competition.

✓ Therefore we provide a fully integrate process

Including design, mold development, punching technique, surface electroplating, machinery processing, etc. We hope to accomplish and integrate all the needs of our customers at once, and provide the full after-sales service.

✓ All the departments of our company are very professional

Including administrative dept., design dept., manufacturing dept., QC dept. and punch dept., which all strictly follow the process flow of high efficiency discreetly.



Competition Advantage & Customer Benefit

- 1) By integrating the process, we can shorten the stage of RD and reduce the cost.
- 2) Familiar with various materials and surface treatment characteristics, we can recommend the selection of materials, according to the use environment of the parts for clients.
- 3) Meet the requirements of our customers to launch the product in the market in time.
- 4) Strict production quality control for our customers.
- 5) Product delivery will be on schedule.
- 6) Meet all kinds of needs of advanced or surface processing for our customers, and deliver the product in time.
- 7) At a time of low profit, Tai-Zhun(Shin-Siang) devotes itself to helping the customers reduce cost and increase quality, creating a win-win situation!